

ALGHERO

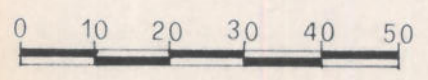
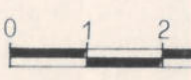
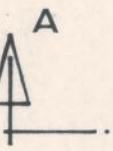
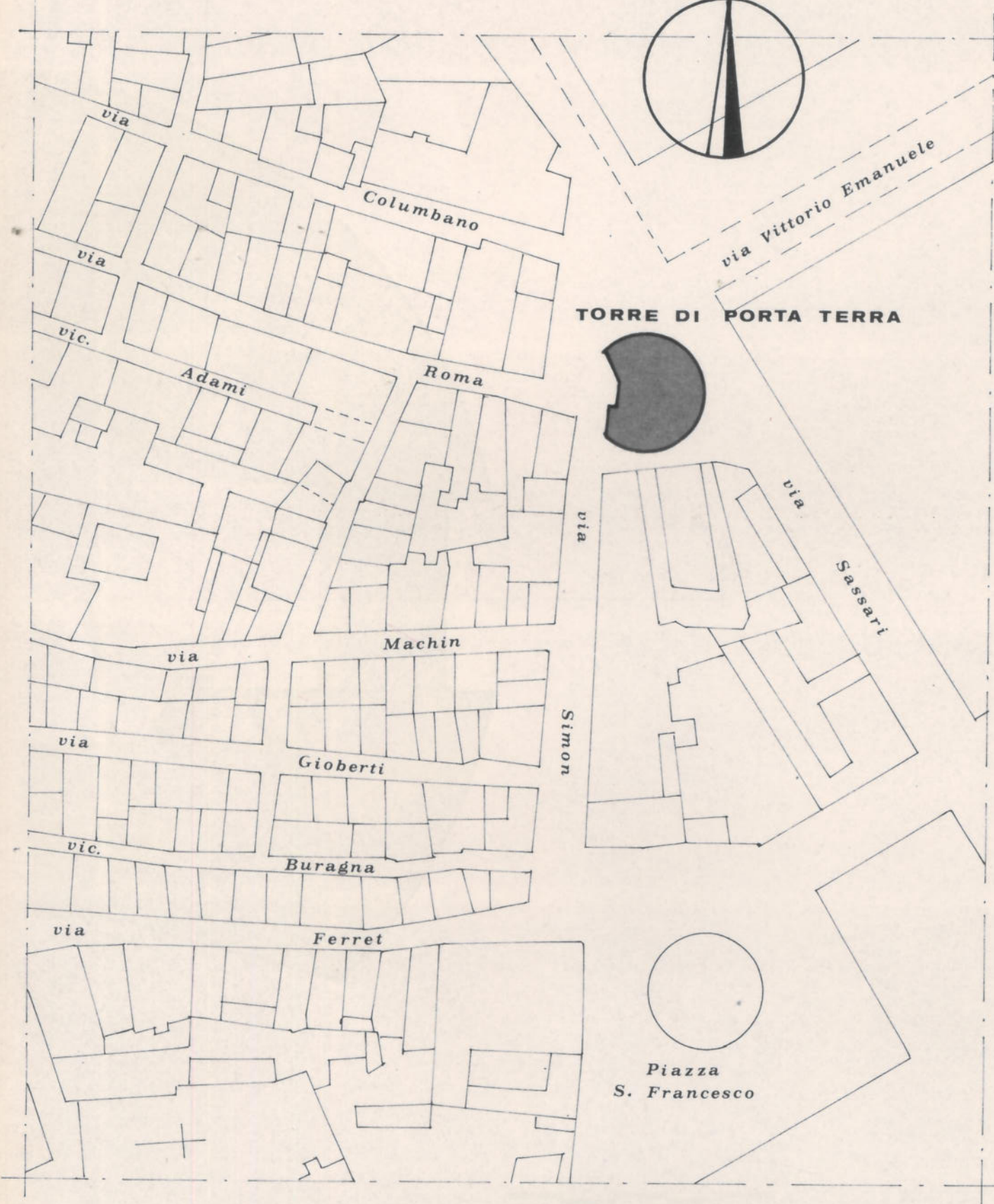
TORRE DI PORTA TERRA

SOPRINTENDENZA AI MONUMENTI
ARCHITETTONICI, ARTE E STORICI
SASSARI

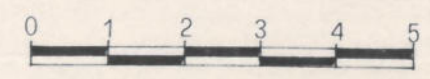
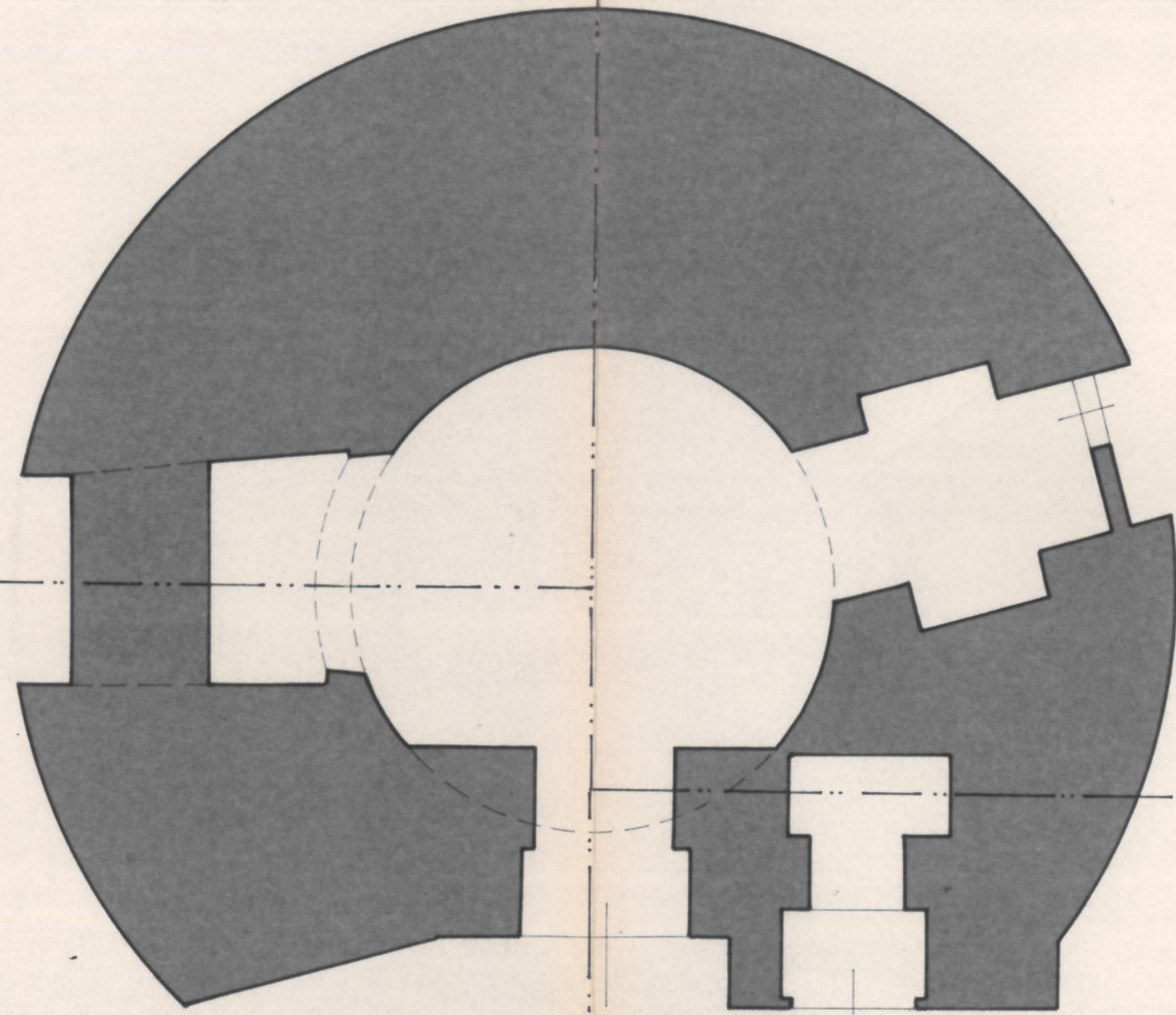
ARCH. FOT. N. _____

CAT. GEN. N. *29/00025/03*

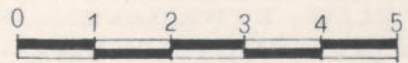
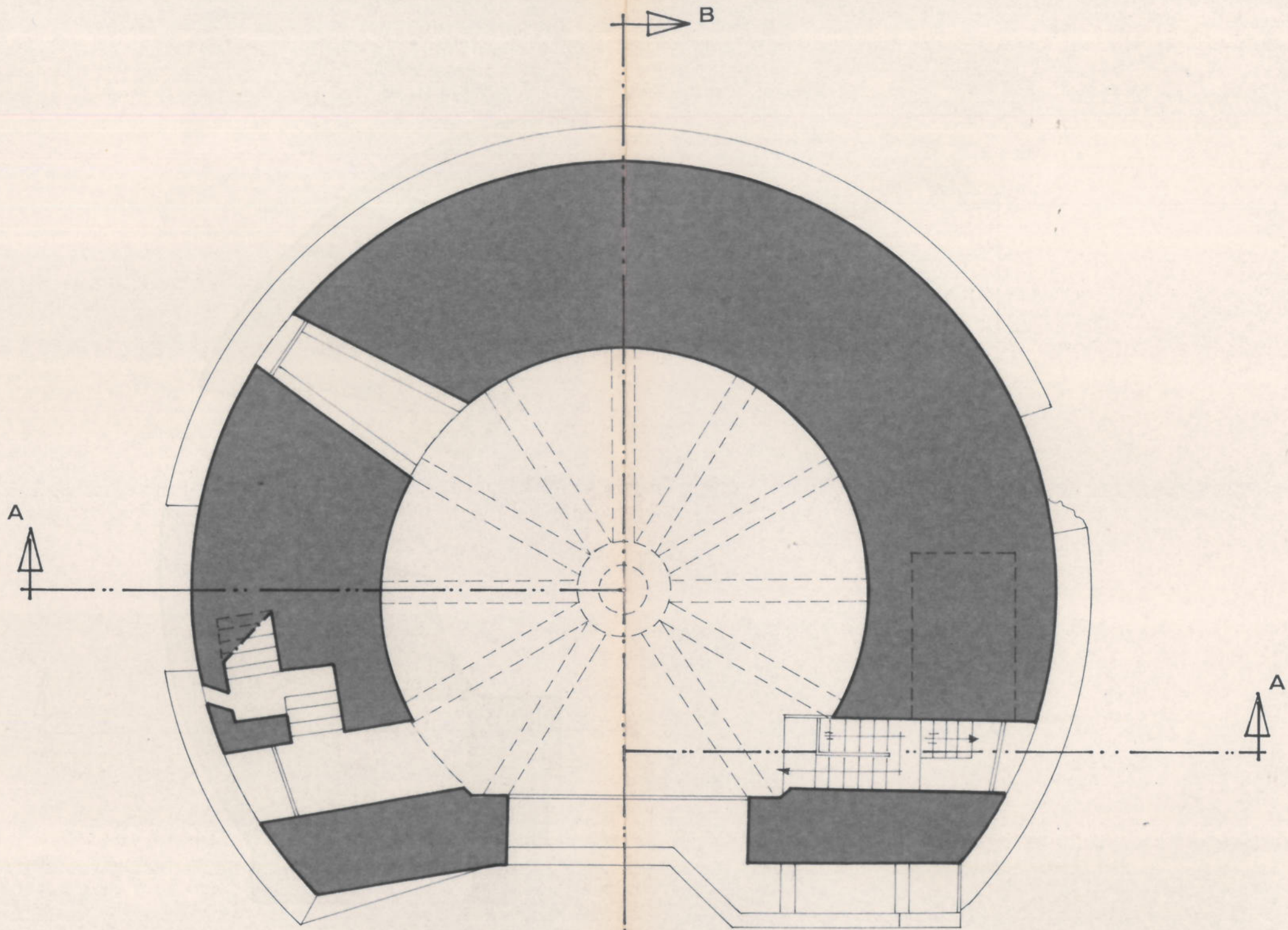
NORD



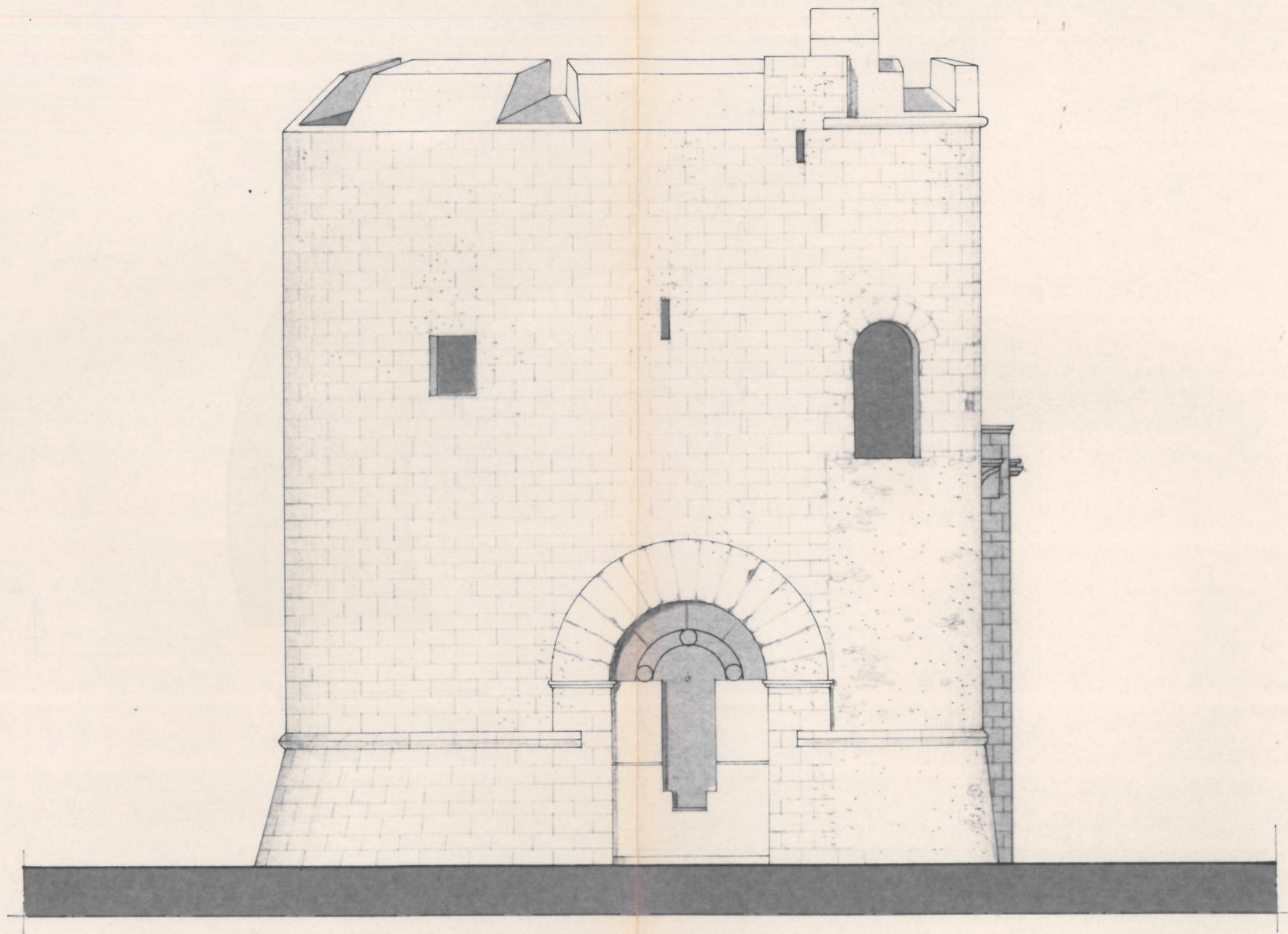
PLANIMETRIA CATASTALE



PIANTA A LIVELLO STRADALE

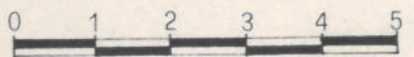
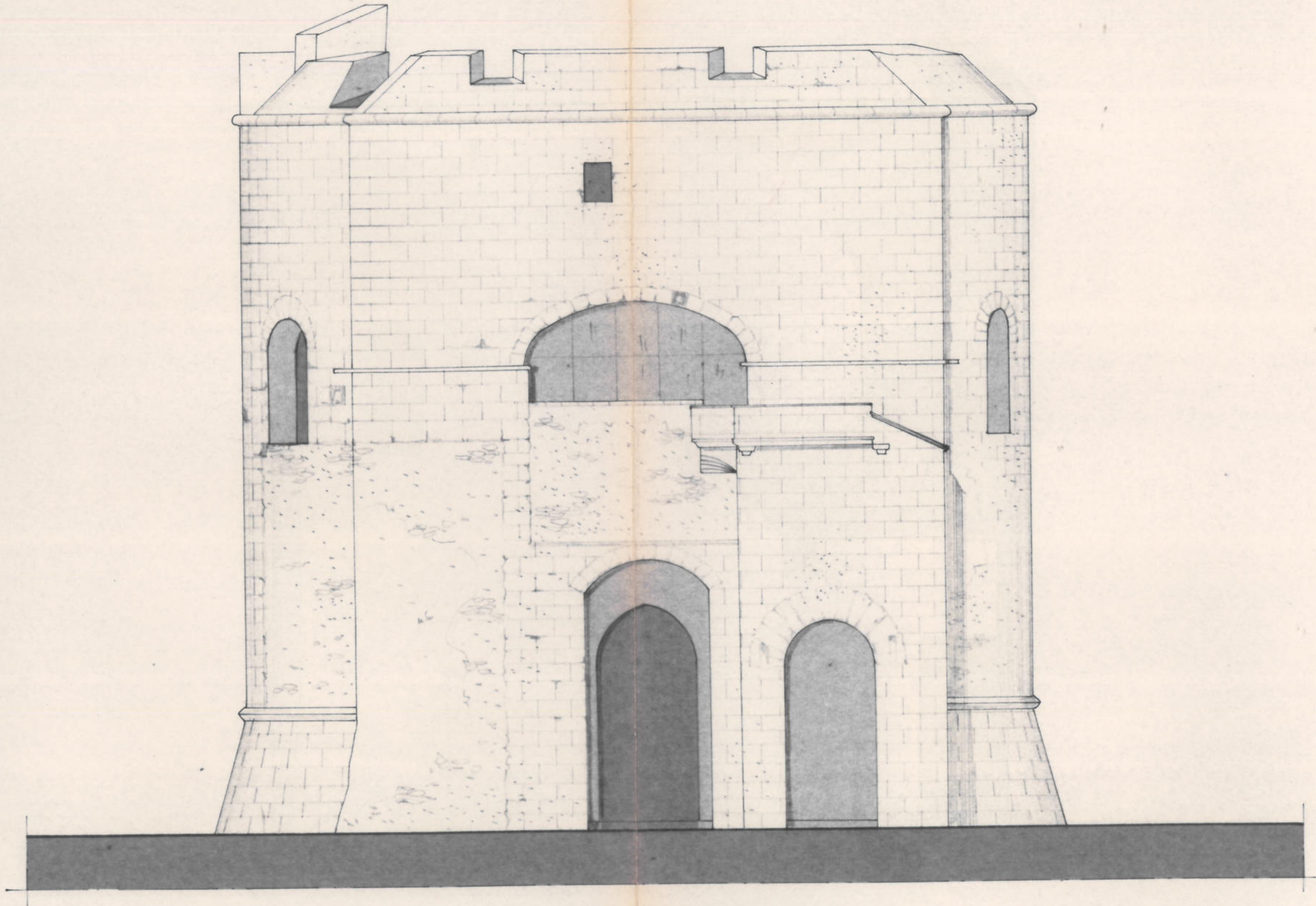


PIANTA PRIMO PIANO

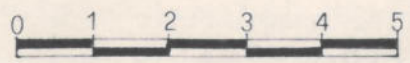
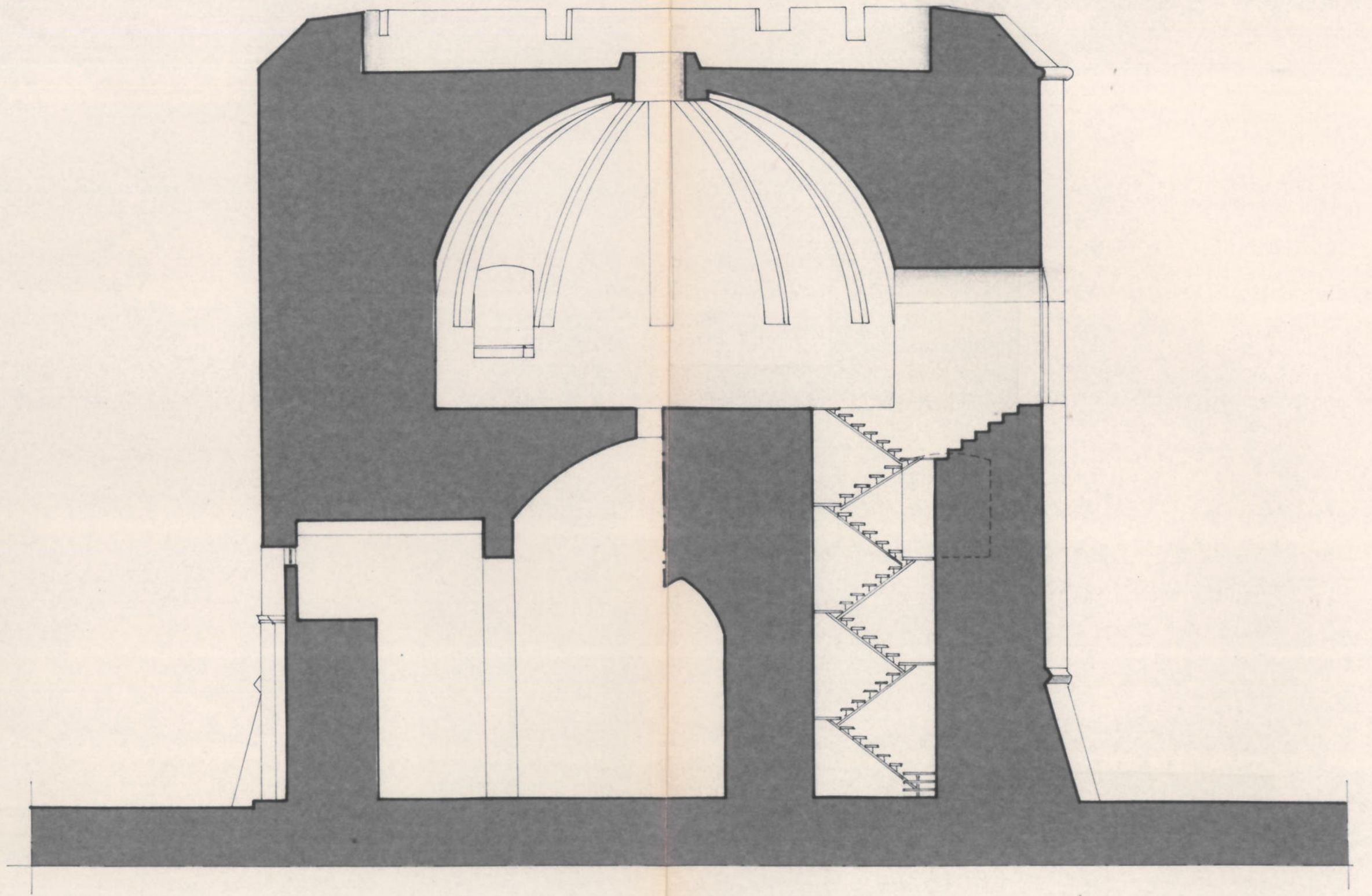


0 1 2 3 4 5

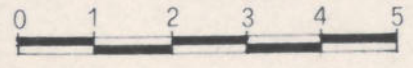
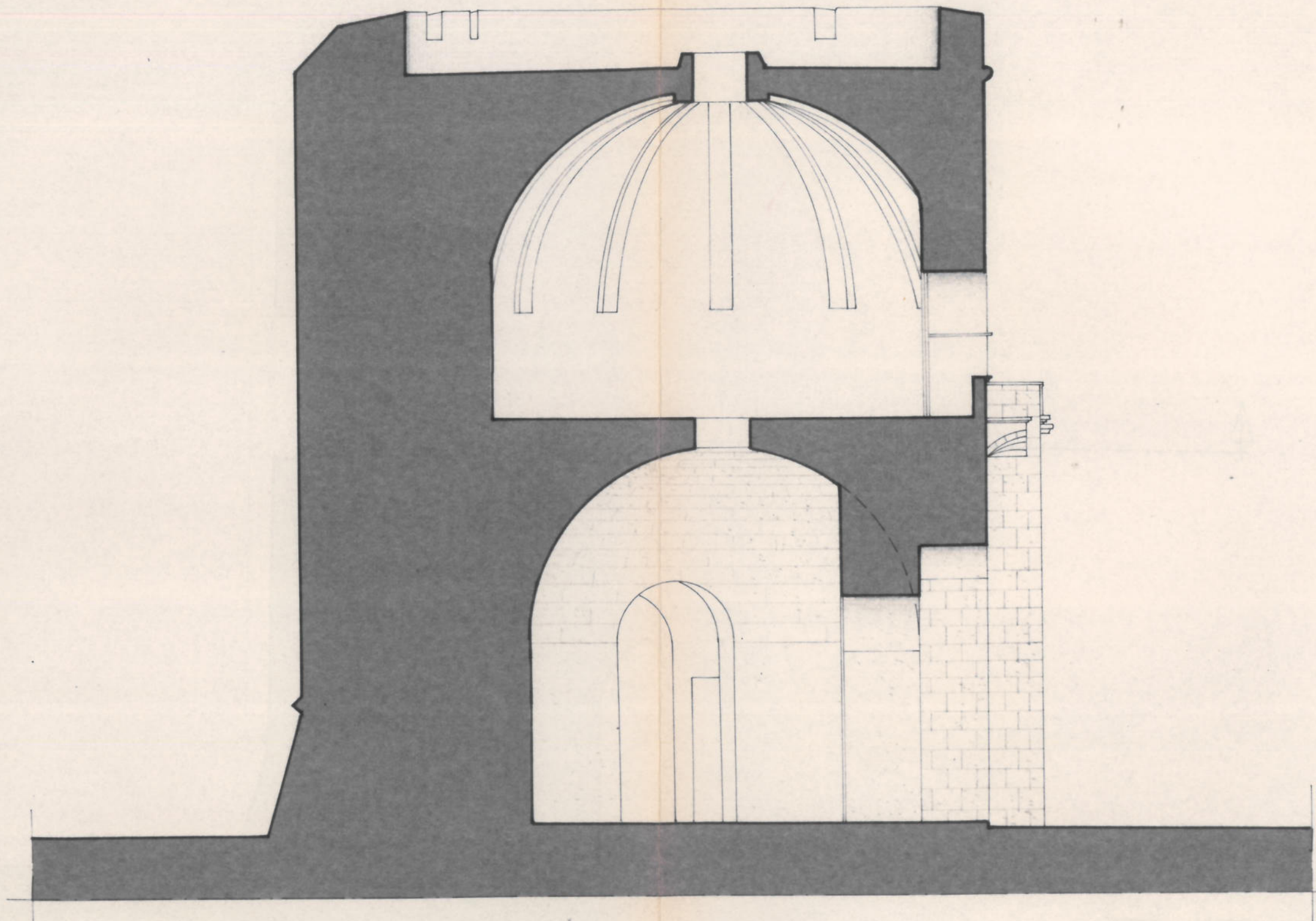
PROSPETTO NORD



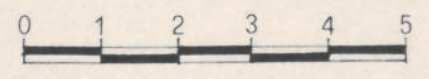
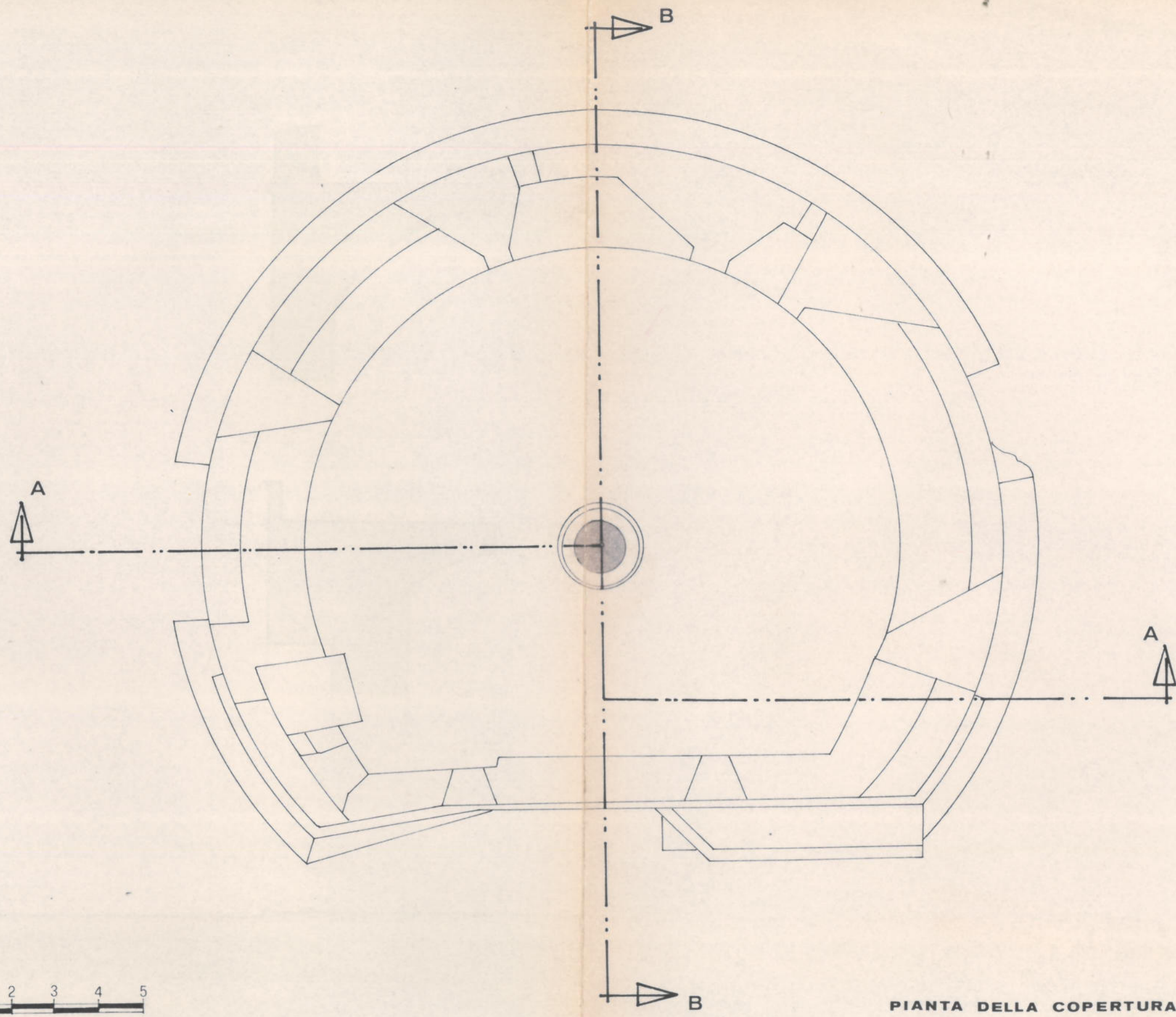
PROSPETTO OVEST



SEZIONE A - A



SEZIONE B - B



PIANTA DELLA COPERTURA