

ALGHERO

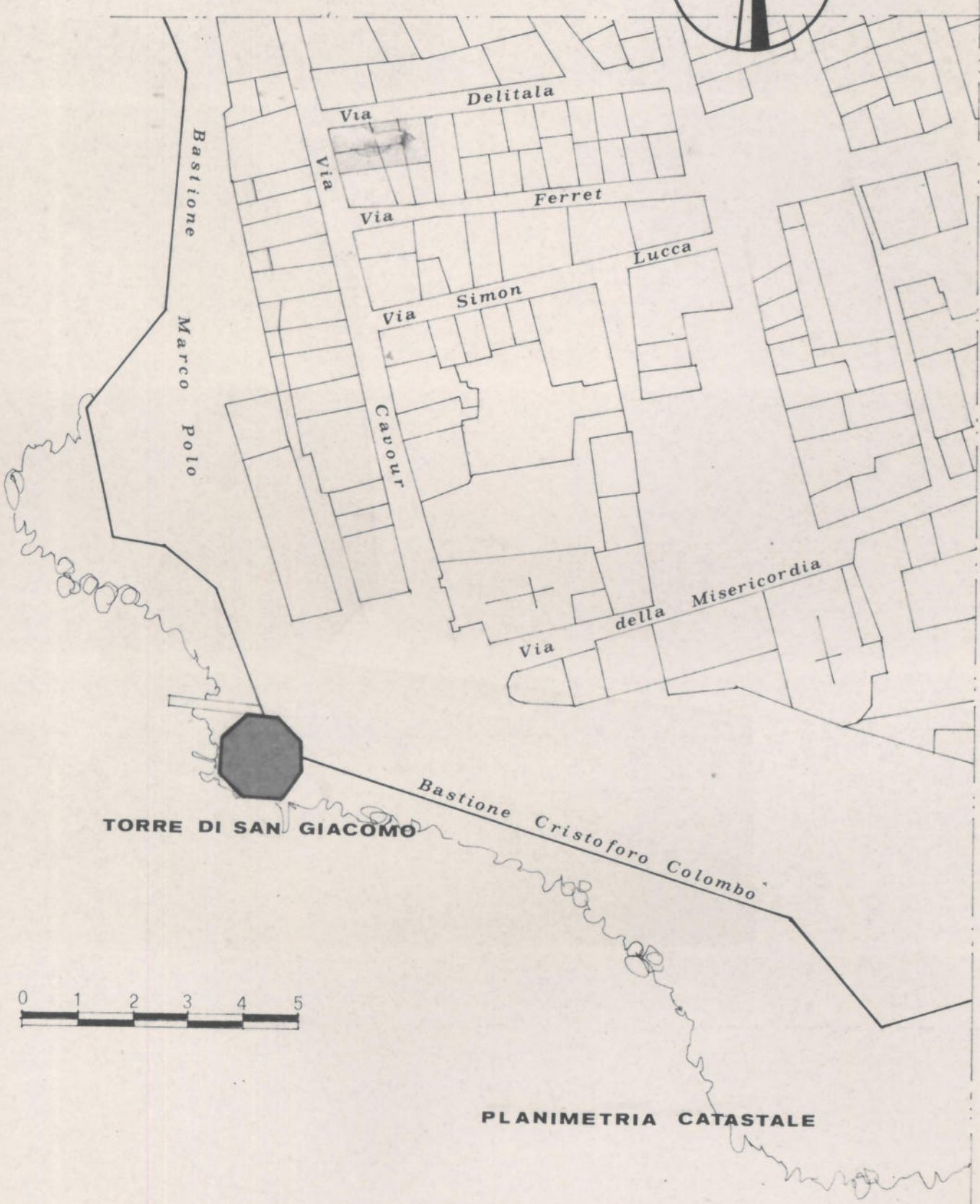
TORRE DI SAN GIACOMO

SOPRINTENDENZA AI BENI AMBIENTALI
ARCHITETTONICI, ARTISTICI E STORICI
SASSARI

ARCH. FOT. N. _____

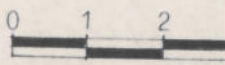
CAT. GEN. N. *20/00025706*

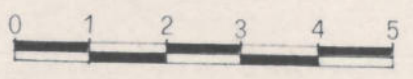
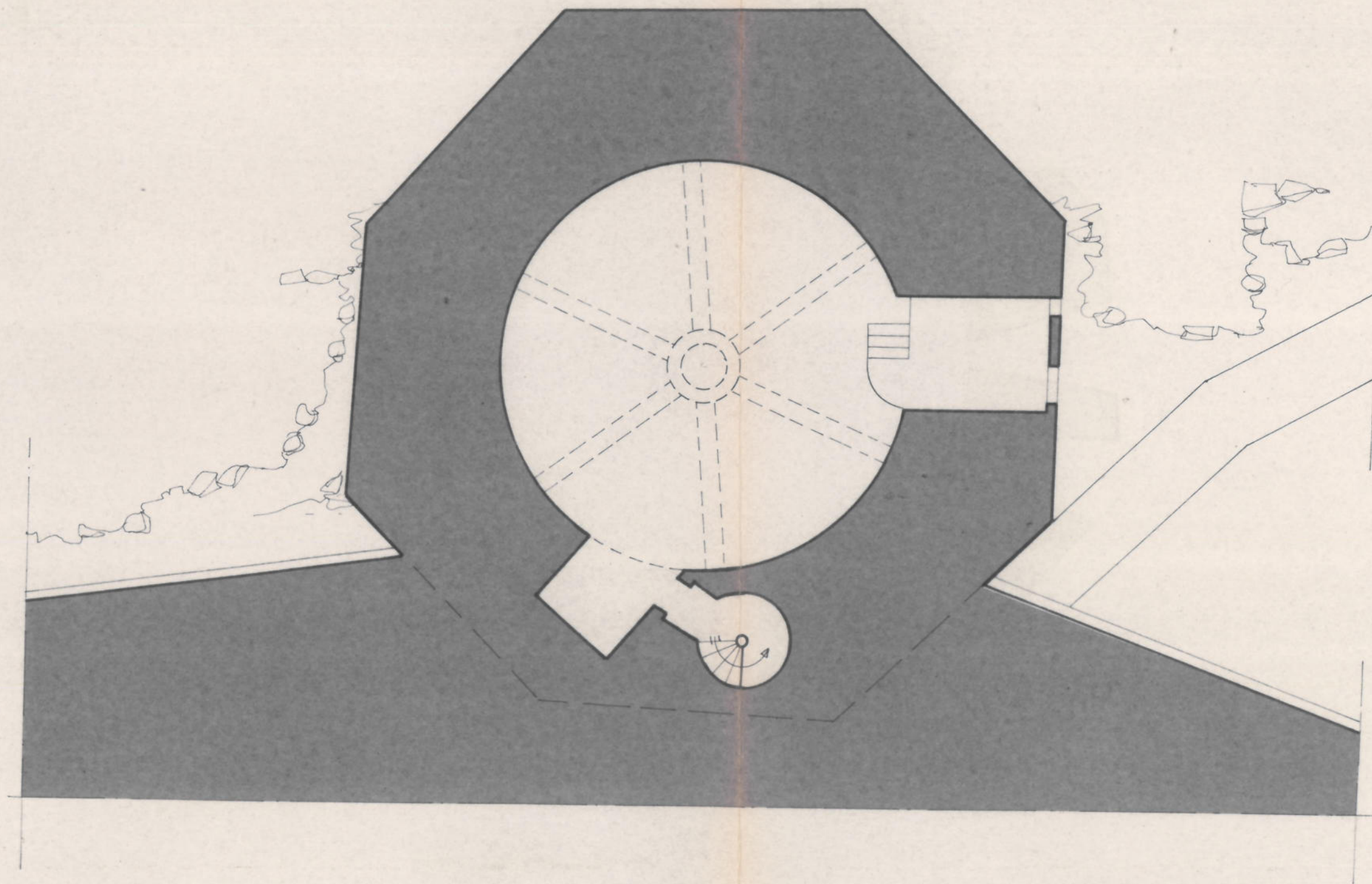
NORD



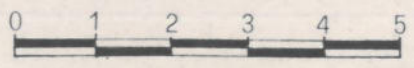
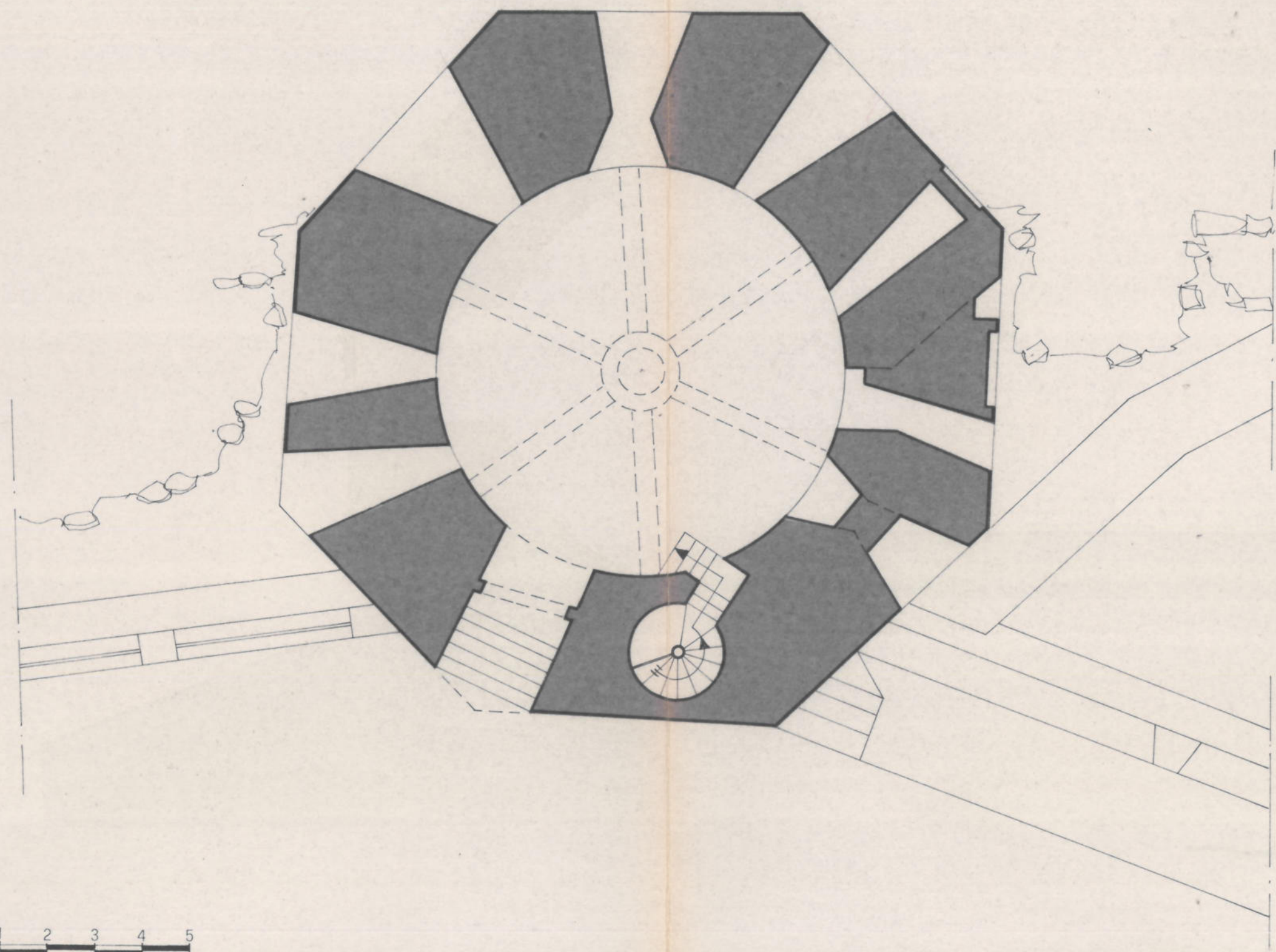
TORRE DI SAN GIACOMO

PLANIMETRIA CATASTALE

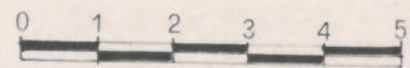
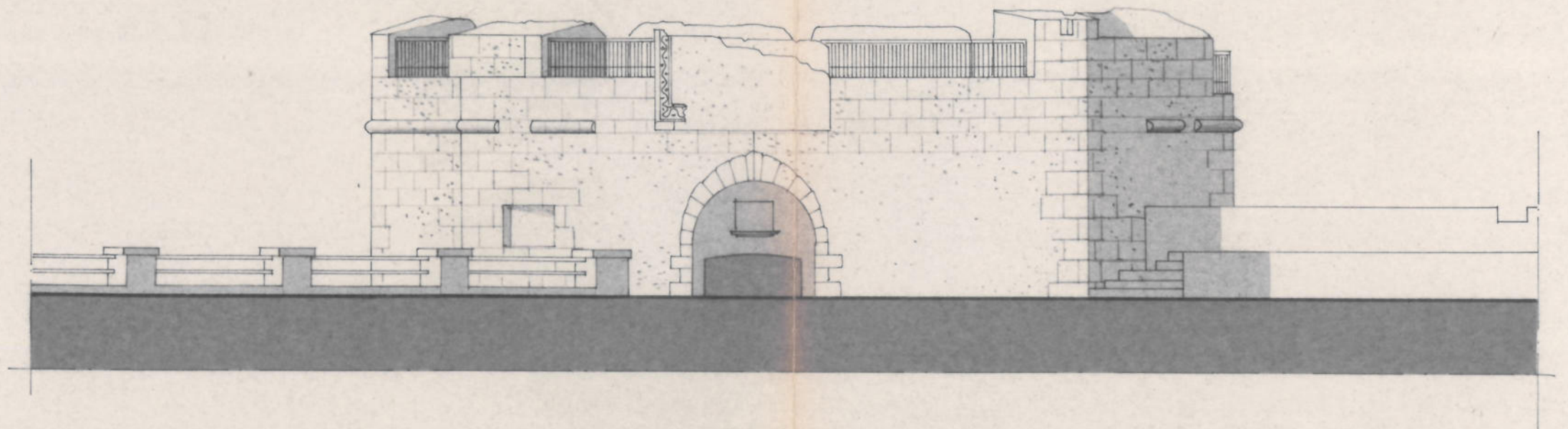




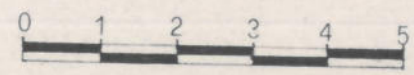
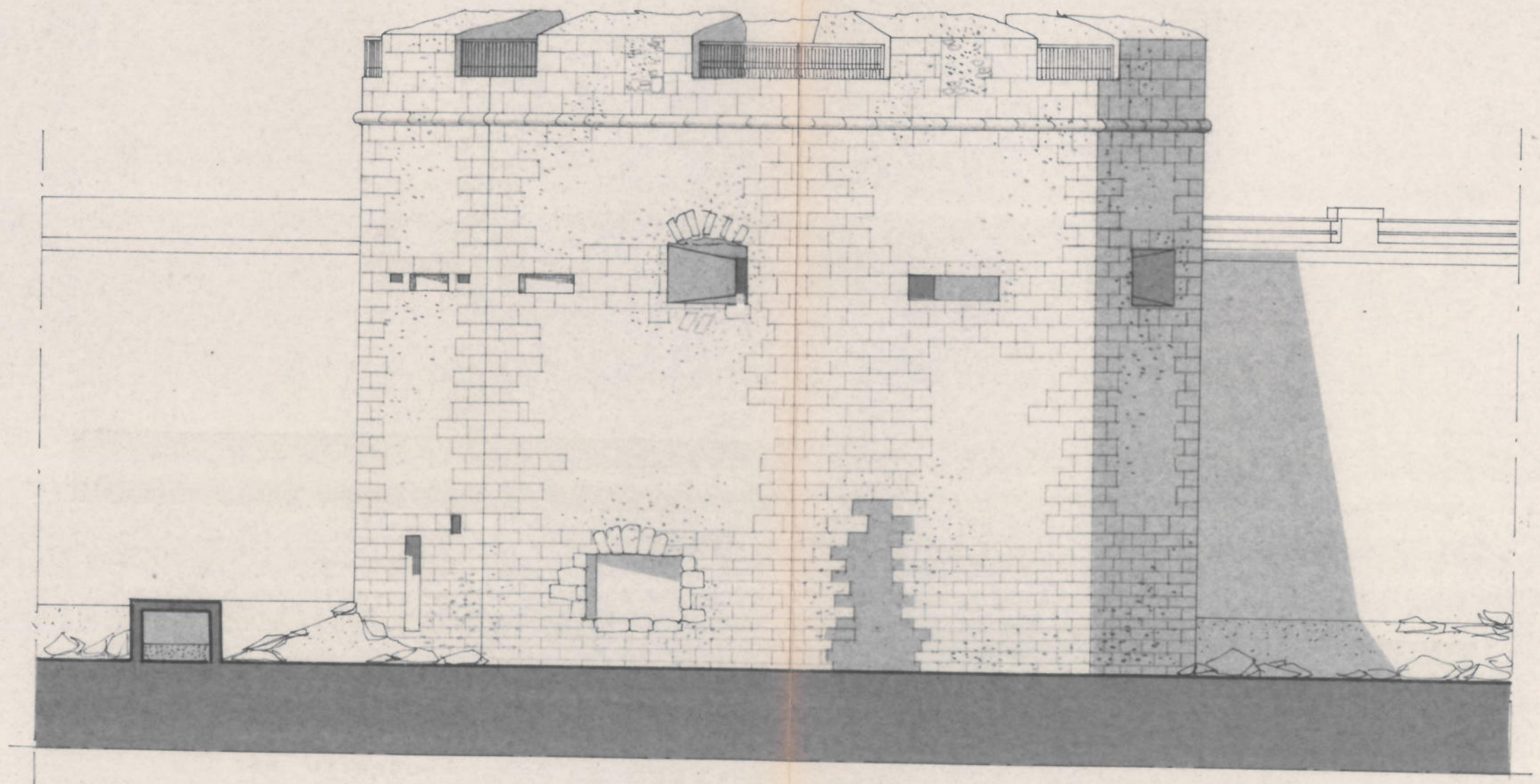
PIANTA A LIVELLO DEL MARE



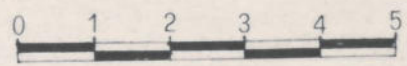
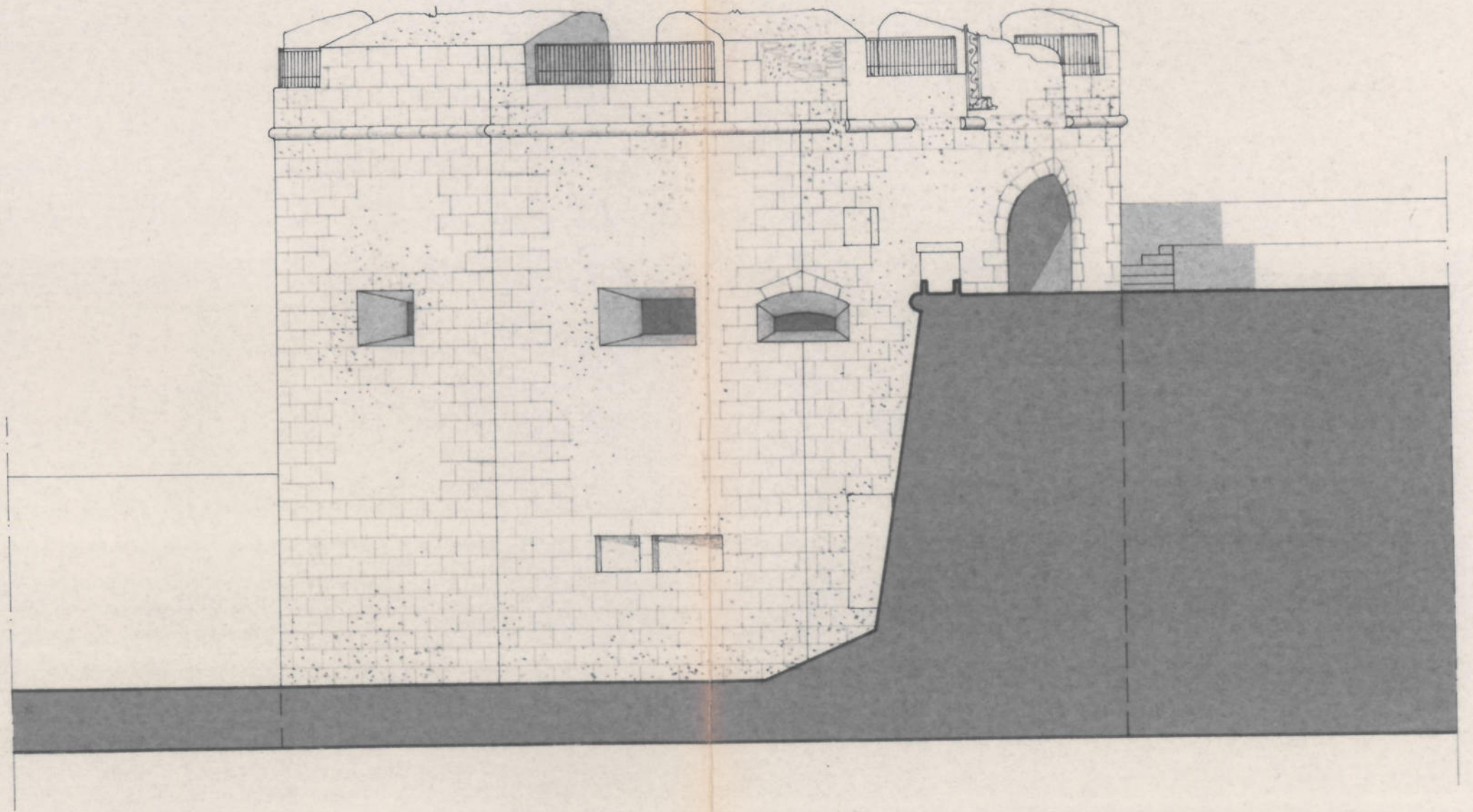
PIANTA A LIVELLO STRADALE



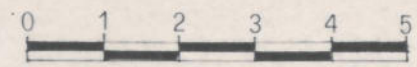
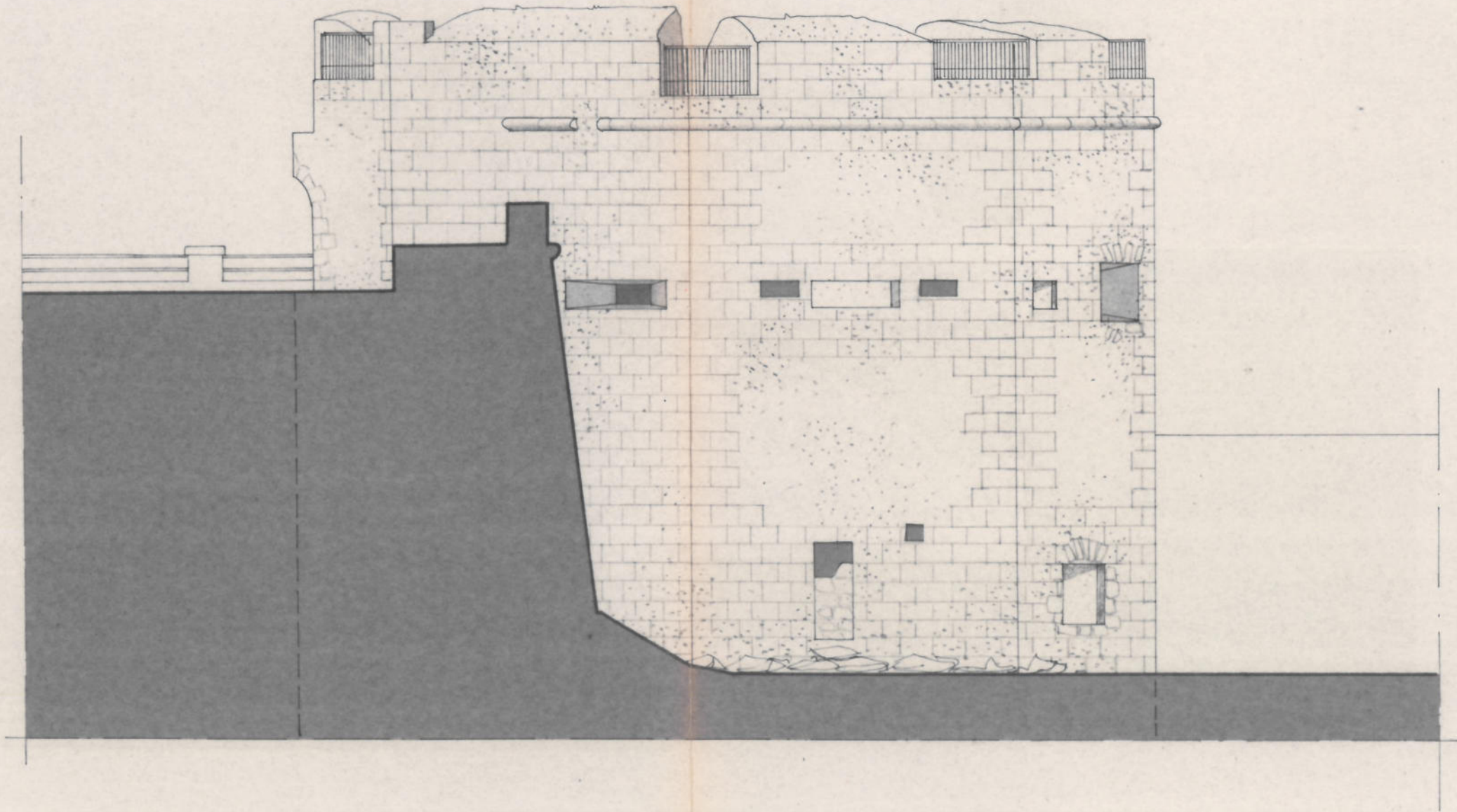
PROSPETTO EST



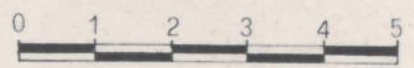
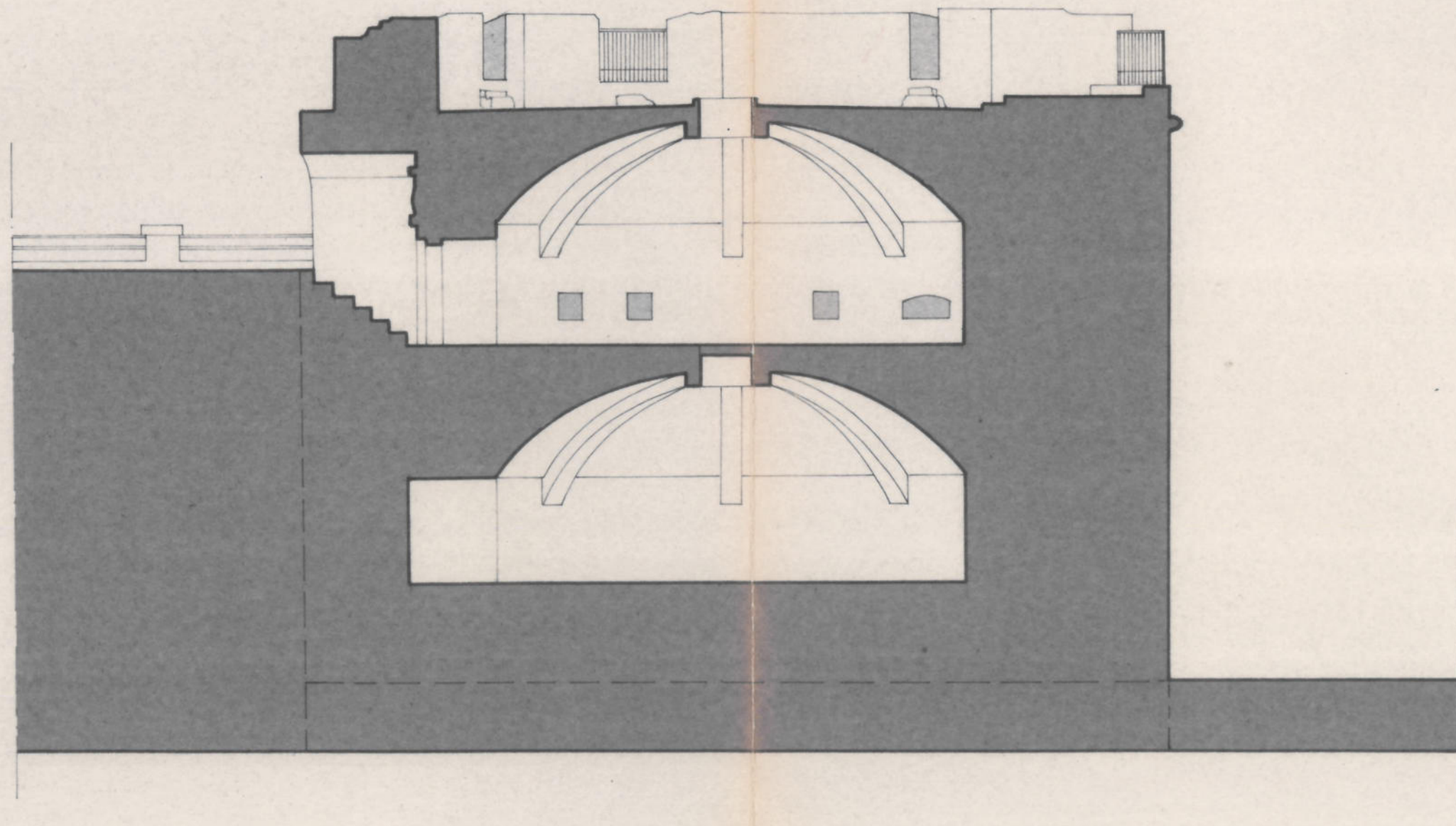
PROSPETTO OVEST



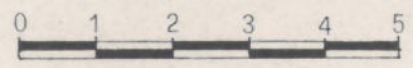
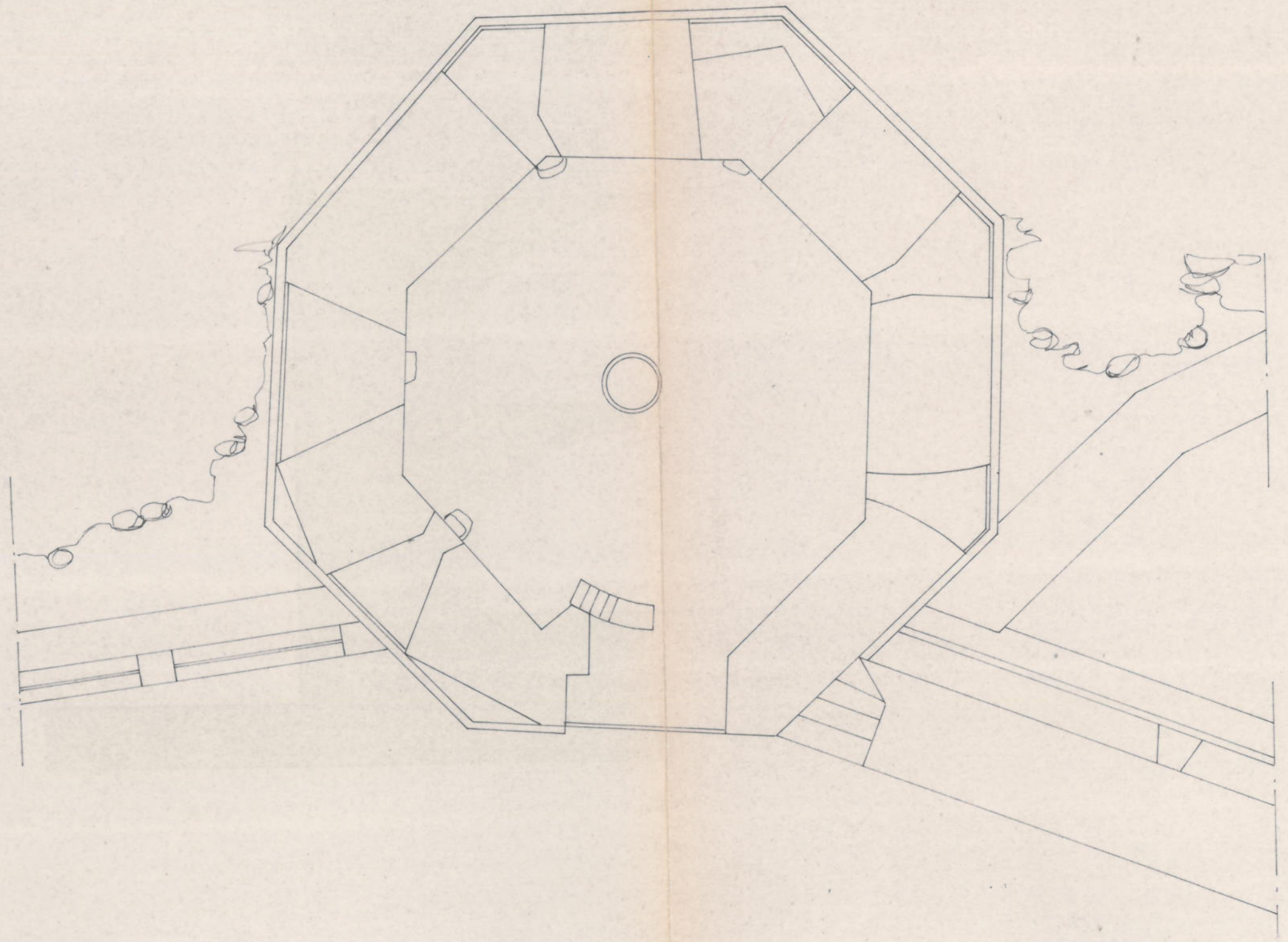
PROSPETTO SUD



PROSPETTO NORD



SEZIONE A - A



PIANTA DELLA COPERTURA