

ALGHERO

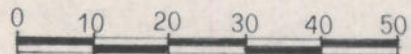
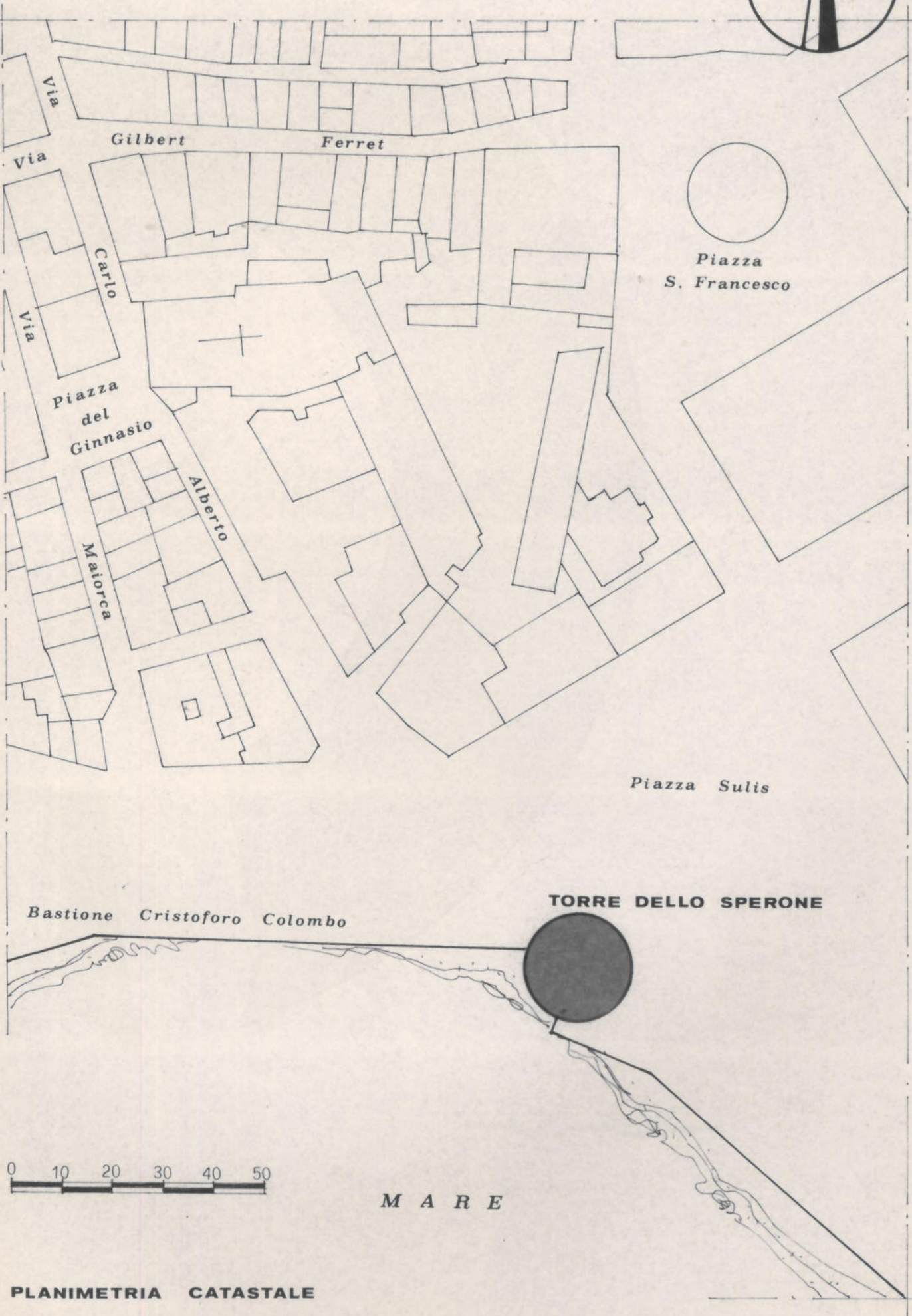
TORRE DELLO SPERONE

SOPRINTENDENZA AI BENI AMBIENTALI  
ARCHITETTONICI, ARTISTICI E STORICI  
SASSARI

ARCH. FOT. N. */*

CAT. GEN. N. *2900025708*

NORD



M A R E

PLANIMETRIA CATASTALE

Piazza S. Francesco

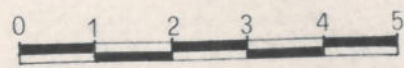
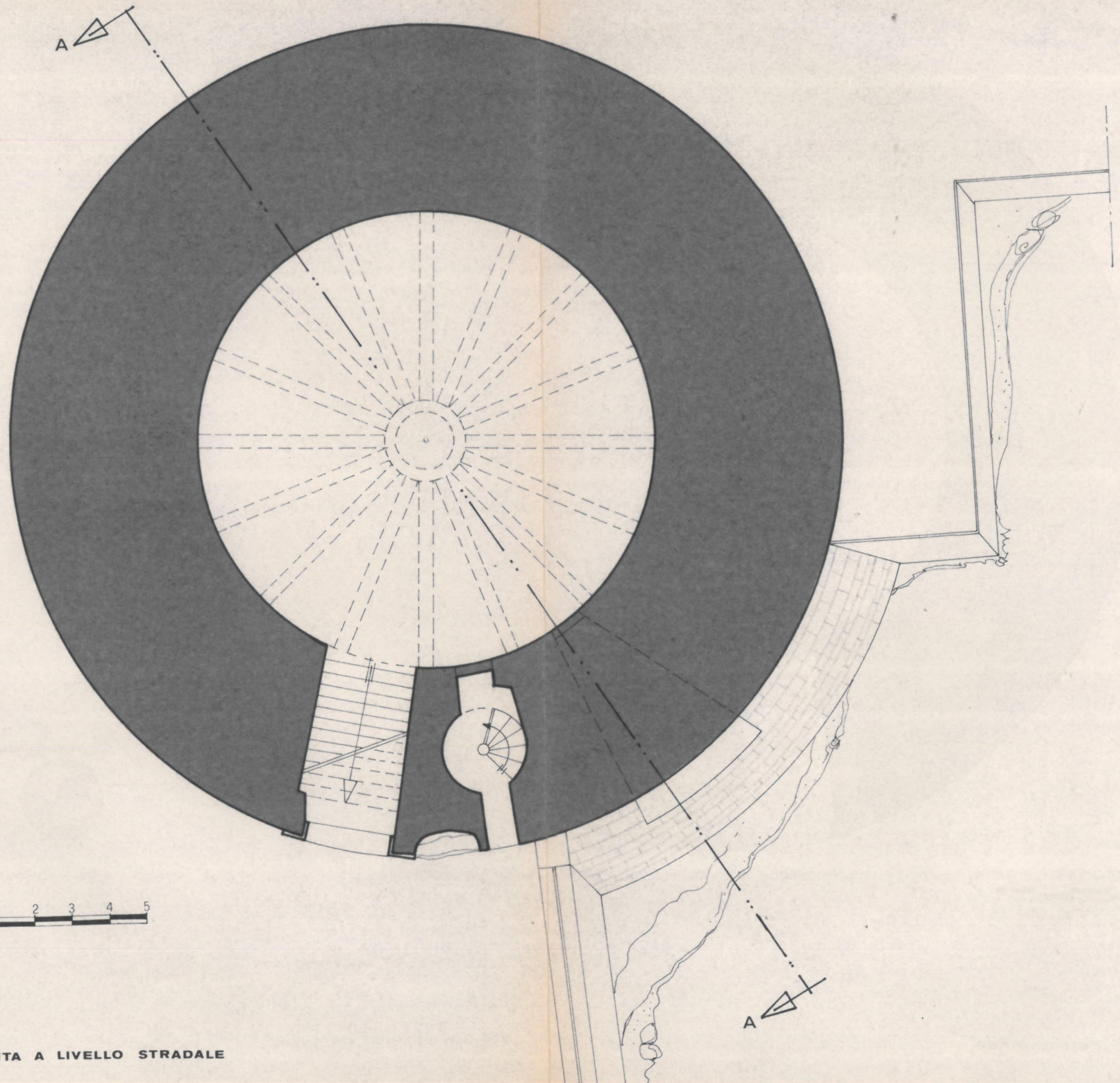
Piazza Sulis

TORRE DELLO SPERONE

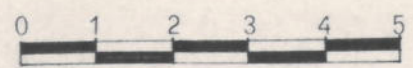
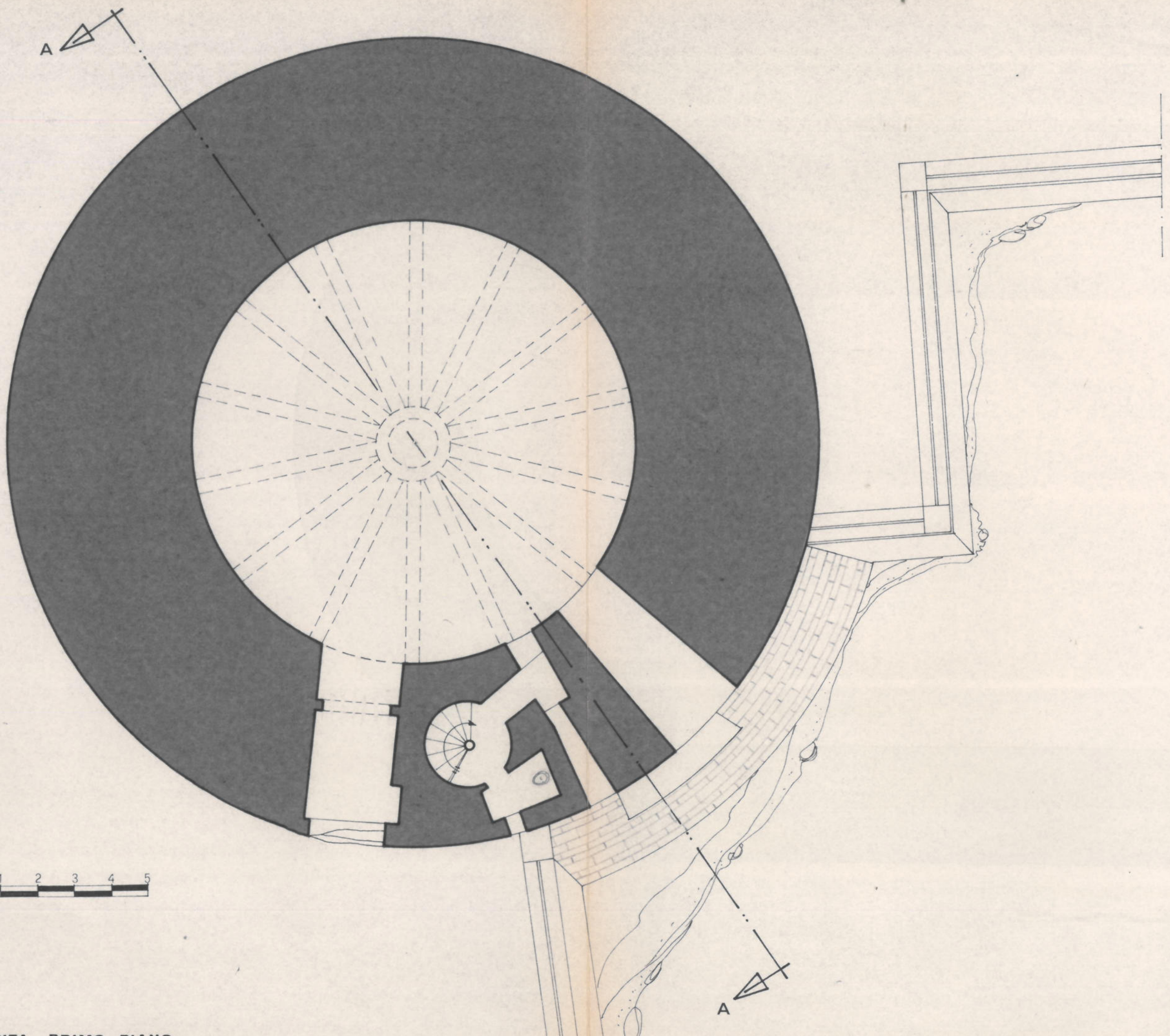
Bastione Cristoforo Colombo



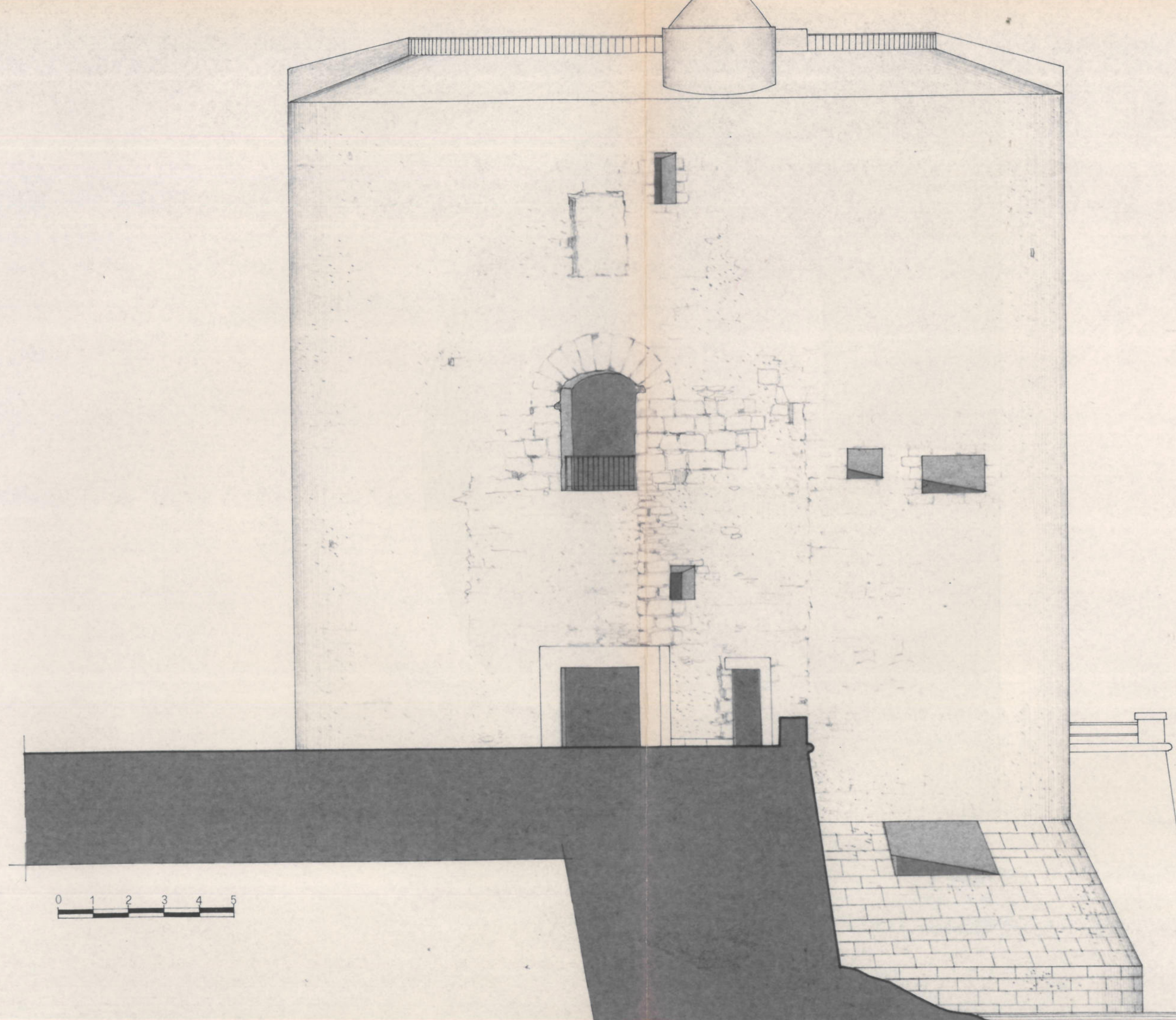
PIANTA A LI

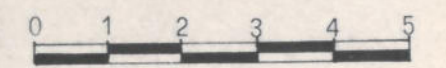
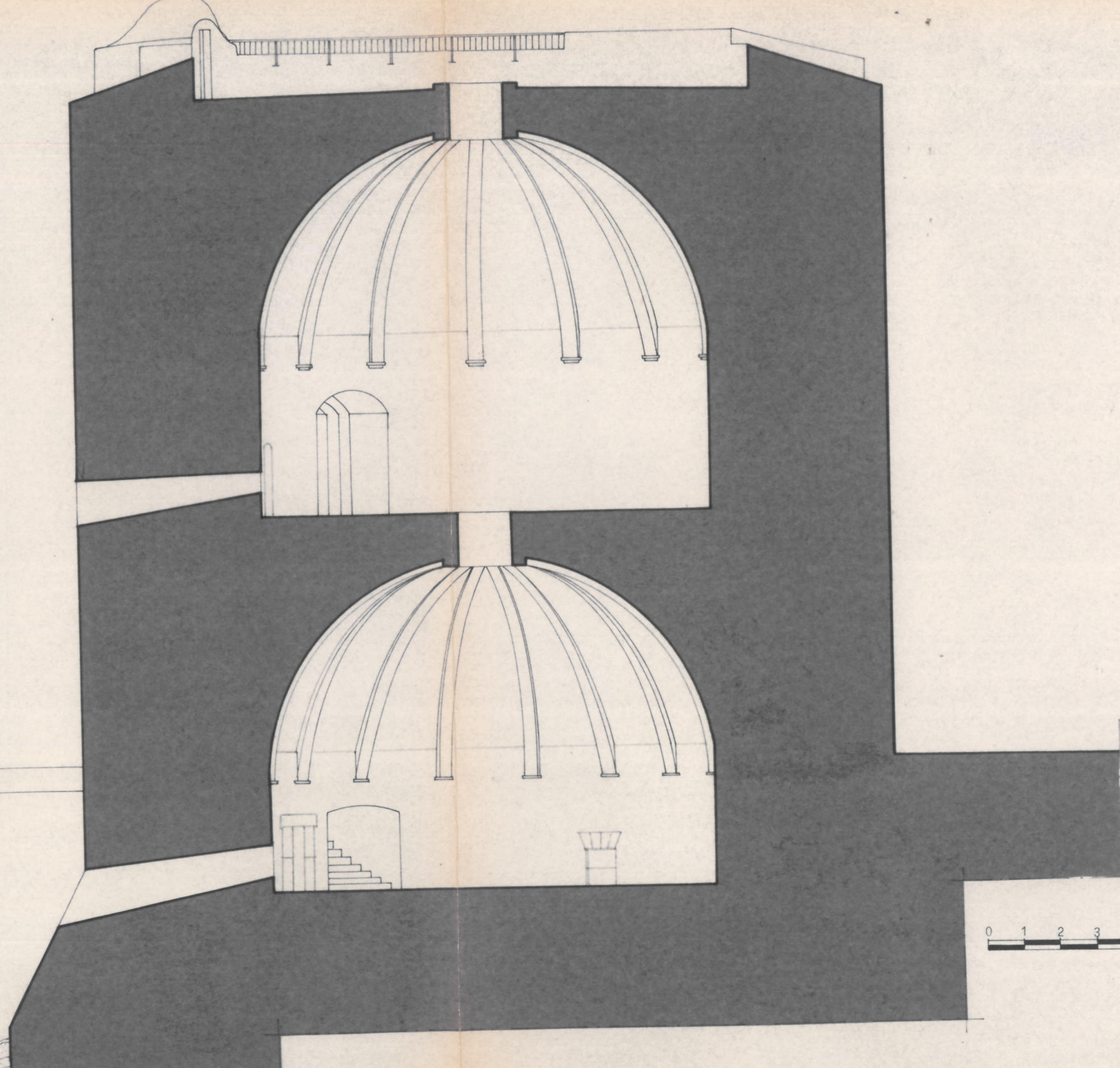


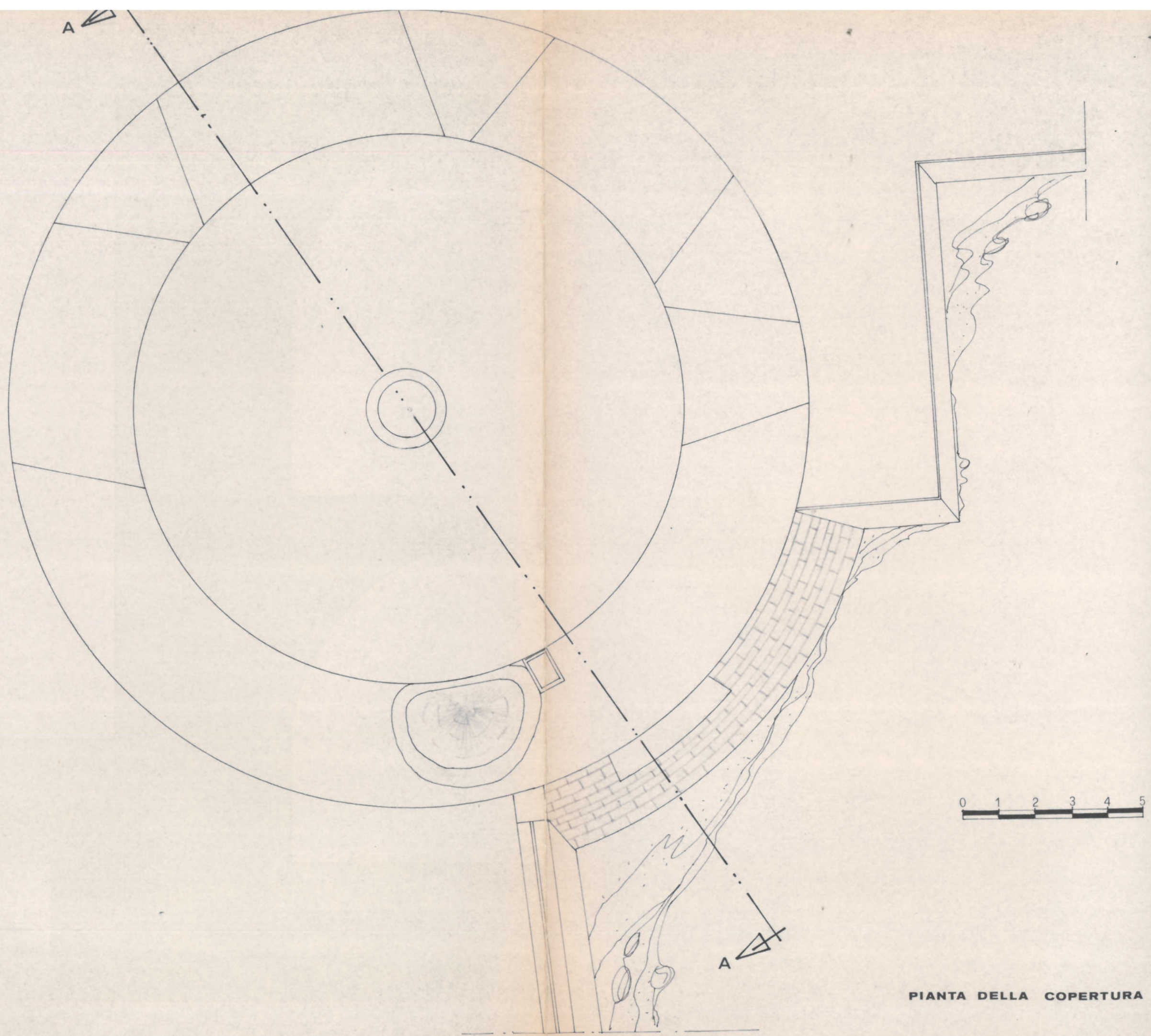
PIANTA A LIVELLO STRADALE



PIANTA PRIMO PIANO







PIANTA DELLA COPERTURA